

# What's HAPPENING

Guide to Local Arts, Entertainment & Events

## INSIDE

- Oregon Academy of Dramatic Arts presents *Elia Preta*
- *I've Heard the Mermaids Singing*—bright comedy at the Bijou
- Geof Morgan—"Men's Lib" music
- Touring hospitals in the Soviet Union
- LRAC Arts Calendar

free



OADA director Beatrice Harpham

# Visual Arts

If this month is any indication, the visual arts in Eugene will be as exciting as ever in 1988.

### LCC Art Gallery

Lane Community College's January exhibit includes an opening reception for the artists on Friday, January 8 from 7:30-9:30 at the Art Department Gallery. Works by Carol Gates (cover) and Richard Pickering will be on display through January. They will each present slide lectures on their works also. (See *WH Calendar*.)

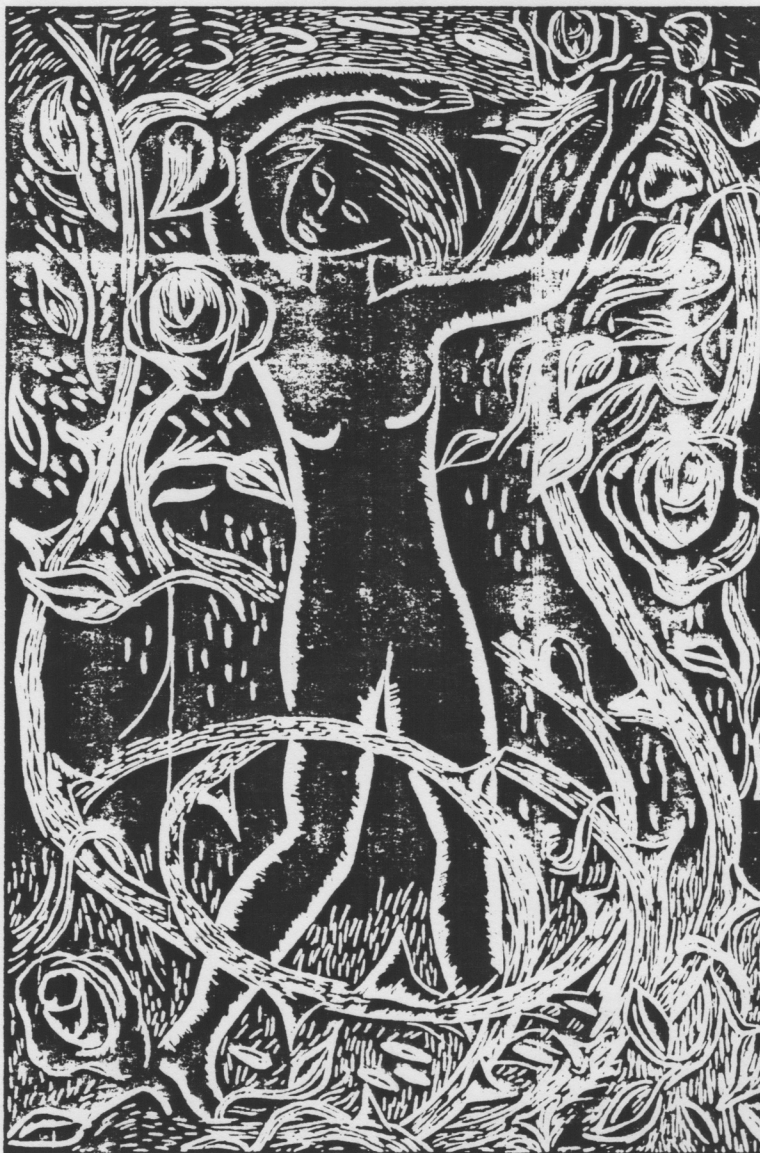
### Kerns Art Center

You can also celebrate the new year with fine art and jazz at the Kerns Art Center's opening of new exhibitions on Friday, January 8 from 7 to 9 pm. Guests will be entertained by Dennis St. Germain Jazz as they view the three artists whose works range from fanciful, three-dimensional constructions to poetic, still-life drawings to dramatic, wearable art.

James Lilly creates three-dimensional constructions with acrylic on masonite or wood. These works developed from his experiments away from the hard-edged geometric style he developed as a young painter. He sees the potential as limitless as he contrasts positive and negative shapes and actually projects his images physically. "Initially these projections were based on a grid system similar to my flat work. When I broke out of the grid, the work became looser and more free, the elements had a feeling of floating." Lilly added recognizable shapes, the first of these being rusted steel (actually masonite painted to look like steel) and finally fish. He suspects the fish have to do with his Northwest upbringing. Many of the works in this show are altarpieces which Lilly creates as personal monuments to favorite places in his life.

William Berry's colored pencil, still-life drawings represent his exploration since 1979 of "the pictorial potential of solid geometrical form in drawing." Tomatoes,

Continued on page 3



*Mysteries of the Rose Garden*, woodcut, 24x30, 1987, by Carol Gates, LCC Art Gallery.